



Then official newsletter of the Queensland Caravan Club Inc

Q.C.C. Wanderer

'Fellowship on Wheels'
FELLOWSHIP ON WHEELS

Issue: 12/2021

Email: editor@qldcaravanclub.com.au

QCC - Established 1949

December/ January 2022

Christmas / Australia Day Edition



The Land of Extremes



Boonah Rally Cancelled



Then official newsletter of the Queensland Caravan Club Inc

Q.C.C. Wanderer

'Fellowship on Wheels'

Email: editor@qldcaravanclub.com.au

Issue: 12/2021

QCC - Established 1949

December/ January2022

PRESIDENTS REPORT DECEMBER 2021

Wet, Wet, Wet – that is how it was in the lead up to our December rally.

Australia had its wettest November on record and Queensland had its wettest November since 2010. Thanks to Bob Kearney for posting photos of the water covering parts of the Boonah Showgrounds. Those photos showed what would have confronted our Marshals and early arrivals at the showgrounds.



By the time this report is published Queensland Government will have opened its borders to fully vaccinated travellers from interstate. No quarantine will be required. New rules will operate for how QCC conducts a Covid safe rally. I expect that on about 17 December 2021 these new rules will be issued. In particular our club will be looking for directions from the Queensland Government telling us how we are to look after members, guests, and visitors who are not double vaccinated and do not have a medical exemption allowing them to remain unvaccinated. For the safety of everyone we have all got to know the Covid rules and know how to implement them.

Have a safe and Happy Christmas. See you at Laidley Showgrounds for our January rally commencing 5th January 2022.

Shane Jones.

Editors Comment:

Whilst it is presently illegal to ask members if they are double vaccinated or not - PLEASE remember that our members are in the very vulnerable group as a result of age and fragility. We all need to ensure that we are not contributing to illness and sickness within our membership.



Queensland Caravan Club Inc
RALLY CALENDAR 2022

Remember to check each month QCC Wanderer for any change in rally details.

Su	Mo	Tu	We	Th	Fr	Sa
2	3	4	5	6	7	8
9	10	11	12	13	14	15
16	17	18	19	20	22	22
23	24	25	26	27	28	29
30	31					

New Year's Day Australia Day 26th
Laidley Showground

Su	Mo	Tu	We	Th	Fr	Sa
6	7	8	9	10	11	12
13	14	15	16	17	18	19
20	21	22	23	24	25	26
27	28					

Dayboro Showground

Su	Mo	Tu	We	Th	Fr	Sa
6	7	8	9	10	11	12
13	14	15	16	17	18	19
20	21	22	23	24	25	26
27	28	29	30	31		

Chinchilla Showground
National Rally Barmera SA

Su	Mo	Tu	We	Th	Fr	Sa
3	4	5	6	7	8	9
10	11	12	13	14	15	16
17	18	19	20	21	22	23
24	25	26	27	28	29	30

ANZAC Day 25th Easter 2-3-2
Goomeri Bush camp

Su	Mo	Tu	We	Th	Fr	Sa
1	2	3	4	5	6	7
8	9	10	11	12	13	14
15	16	17	18	19	20	21
22	23	24	25	26	27	28
29	30	31				

Mother's Day 5th
Samford Showground

Su	Mo	Tu	We	Th	Fr	Sa
5	6	7	8	9	10	11
12	13	14	15	16	17	18
19	20	21	22	23	24	25
26	27	28	29	30		

Gin Gin Showground

Su	Mo	Tu	We	Th	Fr	Sa
3	4	5	6	7	8	9
10	11	12	13	14	15	16
17	18	19	20	21	22	23
24	25	26	27	28	29	30
31						

Lowood Showground

Su	Mo	Tu	We	Th	Fr	Sa
1	2	3	4	5	6	7
8	9	10	11	12	13	14
15	16	17	18	19	20	21
22	23	24	25	26	27	28
29	30	31				

BRISBANE Show Holiday 3 10th
Toogoolawah Showgrounds

Su	Mo	Tu	We	Th	Fr	Sa
4	5	6	7	8	9	10
11	12	13	14	15	16	17
18	19	20	21	22	23	24
25	26	27	28	29	30	

Father's Day 4th
Mulgowie Hall & Grounds

Su	Mo	Tu	We	Th	Fr	Sa
2	3	4	5	6	7	8
9	10	11	12	13	14	15
16	17	18	19	20	21	22
23	24	25	26	27	28	29
30	31					

Queen's Birthday 3rd
Kalbar Showground

Su	Mo	Tu	We	Th	Fr	Sa
6	7	8	9	10	11	12
13	14	15	16	17	18	19
20	21	22	23	24	25	26
27	28	29	30			

Imbil Showground

Su	Mo	Tu	We	Th	Fr	Sa
4	5	6	7	8	9	10
11	12	13	14	15	16	17
18	19	20	21	22	23	24
25	26	27	28	29	30	31

Christmas & Boxing Day
Pine Rivers Showground

Laidley Showgrounds

Venue GPS S 27 deg 20 min E 152 deg 57 min

ADDRESS

24 Hayes Street
City LAIDLEY

Driving Directions

Venue Directions

Turn L at Plainlands to Laidley. Through shopping area. Turn R into Mc Gregor

Street and L into Cooper St and R into Hayes St.

Nearest Intersection—Hayes & Cooper Street

Nearest medical Centre

Lockyer Medical Centre

Address Patrick Street

COST

\$20.00 per van per night

\$3.00 Admin Fee

\$3.00 Hall Hire

Please remember that positions need to be filled at the AGM in May—This is your opportunity to contribute to the ongoing viability of the QCC club. Nomination form Enclosed

There is no Defibrillator and no Dump Point at this venue.

Don't forget that you can dress up your table for Saturday night dinner with Australia Day Theme/ Christmas

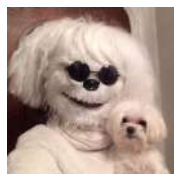


Nearest Hospital

Laidley Hospital
Address 75 William Street

Pet Parade - A Celebration with your Pets

Bring your pets— Dressed in all their attire to this Great Occasion which will be held on Saturday Afternoon at 2.00pm





THEME – CHRISTMAS / AUSTRALIA DAY

Don't forget to dress up the Tables

JANUARY 5TH – 10TH

Thursday 6TH

- LAIDLEY SHOWGROUND**
- 1.00pm Card Making – Xmas card Box - Bev Green
 - 4.00pm Happy Hour
 - 6.30am Walkers
 - 7.00am Golf.
 - 9.00am Crafty Ladies – Marg Hiller
 - 11.00am Committee meeting
 - 1.00pm Craft – Yvonne Robbins
 - 2.00pm Bowls .
 - 4.00 pm Happy Hour
 - 7.30 pm Carols - Barry – Wendy Gibson & others.



Friday 7TH

- Cuppa Time - Break bring a small plate of Christmas/ Aussie treats
- 8.30 pm Songs celebrating Australia - Barry & Wendy Gibson



Saturday 8TH

- 6.30am Walkers
- 9.30am Ordinary Meeting – General Meeting
- 10.45am Tagalong to Bob Kearney's Home – view Model Railway
- 2.00pm Xmas Dog Parade - Pat Mander
- 2.45pm Secret Santa gifts -Santa
- 3.30pm Dress Xmas Meal Tables
- 4.00pm Christmas Happy Hour
- 6.00 pm Xmas Meal and Entertainment –



Hall to be dressed in an Australian Christmas theme

PRIZES FOR THE BEST DRESSED TABLE (Aussie Christmas Theme)

Entertainment for the night will Geoff & Sue Stepping stones

Sunday 9TH

- 6.30am Walkers
- 8.30am Pay the Rally fees - Treasurer
- 9.30am Ordinary Meeting
- 4.00pm Happy Hour

Des Cox will be conducting Didgeridoo Lessons at a time to be determined



Attendees at BOONAH—NIL

We were set to break our attendance record at this Rally - Unfortunately MOTHER NATURE had other plans and as such the rally was cancelled

Who am I?

I was born in Brisbane in the same hospital as my husband and two sons.

My top 5 favourite things are:

Spending time with family and friends

The smile of a grandchild

Laughter

Going to the beach

Pavlova



Here's some helpful tips from the RACQ to make your caravanning experience more pleasant and safer - Taken from CCQ Newsletter

RACQ LIVING

Caravan Etiquette:

The rules every caravanner needs to follow. Whether on the road or in a caravan park, there are rules all caravanners should follow while on a road trip. If you're new to caravanning, or just want to brush up on your caravanning manners, this guide with information from Caravanning Queensland, RACQ and other experienced caravanners will ensure your next trip runs smoothly.

Road Etiquette:

Keep to the left lane unless overtaking.
Don't unnecessarily hold up faster traffic.
If there is a build-up of traffic behind, pull over when safe to do so and allow it to pass. Allow plenty of space for other traffic to pass. The law requires caravans and other large vehicles travelling outside built-up areas to leave at least 60m between each other. The distance increases to 200m in road train areas.
Consider fitting a UHF radio to communicate with other road users. This can be helpful when on narrow roads and overtaking. (Use channel 18 which is widely considered the caravan or travellers channel).

Use indicators and give plenty of warning about your intentions.

Caravan Park Etiquette:

Be friendly to your neighbours. You all share the same site and amenities.

Don't walk across someone else's site. Try to stick to the walkways where possible.

If you're at a pet-friendly caravan park, make sure your dog is well behaved.

Keep noise and lights to a minimum. There's not much separating you from your neighbour so be as courteous as possible.

Don't make a mess and clean up all your rubbish before you leave.

Follow the park rules that are in place.

Only dispose of toilet waste in designated dump stations and wash down the dump station after emptying your holding tanks.

<https://www.racq.com.au/Living/Articles/Caravan-etiquette>

JANUARY BIRTHDAYS

1 EGEN Ian
 4 BELL Fay
 4 BURDETT Ivan
 8 STEGEMAN Rod
 8 HOLMES Elizabeth
 12 WALKER Jeanette

13 WAYCOTT Bill
 13 DAY Kevin
 16 STOCKER Eddie
 17 BURT Doug
 18 COCHRANE Jeff
 20 JONES Linda
 20 PARK Terry
 20 NOFFKE Owen

22 MAY Bruce
 30 SHEEHAN Brian
 31 COCHRANE Jean
 31 MAY Gail
 31 EGEN Gwen
 31 MC GOWAN Murray

JANUARY ANNIVERSARIES

1 JONES Noel & Olive
 2 KEARNEY Bob & Kathy
 9 MUNRO Ross & Jan
 10 CARROLL John & Jenny

15 BAKER Gordon & Sue
 16 SAVAGE Adrian & Ann
 21 USHER Les & Brenda



My wife was giving a speech at her parents' wedding anniversary, and my phone battery ran out in the middle of recording it. Now I will never hear the end of it



18th National Caravan Clubs Rally
 Riverland Events Centre, Barmera
 SA

**28th March 2022 to 6th
 April 2022 (10 nights) Ar-
 rive 28th March, Depart
 7th April 2022**

**To register go to the Na-
 tional rally website at: And
 follow the links at:
 www.18thnationalcaravan
 rally.org.au**

***Safe Travels to
 those members
 attending this rally***

**TRAVELLING TO THE
 NATIONAL RALLY**

VACCINATE, VAC-
 CINATE, VACCINATE

The NACC guidelines to be followed for the 2022 National Rally are: a) That all attendees be able to provide on entry to the National Rally, formal evidence of double vaccination prior to 14/03/2022 or b) provide an authorized medical exemption. c) Each attendee to use the SA QR code to check in to the rally site. d) Rally organisers to check and advise rally attendees if any SA Health directives relating to events are applicable leading up to and during the period of the rally.

WARNING

**SOUTH AUSTRALIAN
 RIVERLAND FRUIT FLY
 EXCLUSION ZONE**

Fruit and vegetables: Quarantine regulations regarding Fruit & Vegetables are a moving target at the moment. In short the latest restrictions are: You cannot take Fruit and Vegetables (unless cooked) into the Riverland area and your cannot take Fruit and Vegetables (unless cooked) out of the Riverland area. Please refer to the Riverland 'bring a receipt' changes below. The previous guidelines, where you could show proof of purchase of fruit and vegetables have changed.

**INSPECTORS WILL
 NOT LET YOU OFF
 WITH A WARNING**

If you are caught taking fruit and vegetables in or out of the Riverland fruit fly exclusion zone you WILL be fined. There is a zero tolerance policy in place. The practice that is commonly taking place in and out of the Riverland area is: Do not take fruit and vegetables with you. You can buy fruit and vegetables in the area. Any fruit and vegetables bought in the Riverland area must be consumed in the Riverland area.

<https://fruitfly.sa.gov.au/travelling-restrictions/travelling-to-south-australia>

Bev's Card Making Class

<u>Card Kit—Needed for Class</u>	Double sided Tape 3mm
Pencil	Sharpe Metal Knife with blades
Scissors	
Metal Ruler with both inches and Metric	Glue Tombow Aqua Mono Liquid Glue
Rubber, Scorer	3D Foam Squares Acid free
Double sided Tape 6mm	Sticky Tape with Dispenser



CRAFTY WORKSHOP

Craft Supplies needed for snowman

Polystyrene balls:

Small Snowman: 5cm for head & 6cm for body

Medium 6cm for head & 7.5cm for body

Large 7cm head & 9cm for body

If you cannot get the exact size as close as possible

We will have felt and fabric scraps for scarfs and pom poms

If you haven't got any,

I will supply black and orange pins for eyes and nose and rubber bands.

Socks can be purchased at best and less (Infants)

Poly balls are available at most discount shops. It will only be a gold coin donation for any bits and pieces. Don't forget we have 2 sessions on Friday 9am to 11am and 1pm to 3pm, so lots of Christmas goodies to make.

Any queries please ring Margaret or Di Thanks



MEMBERSHIP FEES

Membership fees of \$50.00 are now due and need to be paid promptly to the Treasurer

NAME BADGES

A reminder to members to wear you NAME BADGES for the duration of the whole Rally—We have a number of new members that will benefit from you wearing your badge. The alternative is to be confronted by the NAME BADGE Policeman—Ray Caddies who is a tough one.



Member Profile - Bob Kearney



MY HOBBY MODEL TRAINS

Probably I became interested in model trains from a very early age

when I was given my first train set, a Hornby clockwork train which I still have today.

My first electric trains were HO scale 1:87 or roughly 3mm to every foot of the real locomotive.

Direct current or (DC) ran the trains from 12volt power packs of which I had four to run separate tracks at our previous home in Logan where I set up a layout in a 6m x 6m area of my shed. I did change the layout a couple of times especially after visiting model train shows and finding new ideas.

One big mistake I made was using chipboard for the base. Not good when watered down glue for the scenery seeps into the board and even if you did not want hills you ended up with them when the chipboard swelled.

I started off purchasing American locomotives and rolling stock as they were at the time the most popular due to price and availability

I had model train layouts for many years at our previous home. I belonged to a group in Logan who visited different homes once a fortnight where we talked trains and gathered different ideas.

After nearly 40 years at Marsden we decided to move to Grantham where for the first year or so we concentrated on setting up our new home.

However model trains were still on my mind and was not long before I had plans in place.

Continue on next page.



Photographs of members and family may appear in publications and on social media, eg., the Club newsletter, website, Facebook, or other Club-sponsored publications. If a member does not wish for this to occur, the member should inform the Secretary in writing as well as advising the person taking the photograph. Whilst all care will be taken to comply with this request, no guarantee can be given that this will not occur.

Some of the ideas I gathered from the previous group were expensive such as changing the system to (DCC) Digital Command Control which allowed me to control locomotives from a hand held unit enabling me to recall different CABS or locomotives. It was quite a task to design and rebuild the layout using as much materials and buildings from my previous layout as possible.

To cut a long story short, the current layout is in a 7m x 6m room. The design consists of two main tracks, twelve fiddle yard tracks and numerous sidings.

Scenery is arid landscape. I have approximately 28 locomotives, lots of rolling stock, and lots of track. I have two Big Boys which were one of the largest steam locomotives in the world measuring 132 feet in length and weighing 600 tons and approximately 6000 hp. I certainly would love to see the real one.

Most of my locomotives have sound with both diesel and steam helping to make the model scene seem and sound as realistic as possible.

My model is an ongoing project and will never be finished as adjustments are added or improved to scenery, track and the layout.

The pictures below are a portion of the new layout.



Thank you Bob for giving us an insight to your passion— Members will have the opportunity to view BOBS trains with the tag a long to his home on Saturday Morning

President	Shane Jones	0421 821 114	president@qldcaravanclub.com.au
Secretary	Carol Day	0418 777 192	secretary@qldcaravanclub.com.au
Editor	Richard van Wyk	0457750052	editor@qldcaravanclub.com.au
Chief Rally Marshall (Acting)	Greg Mander	0417 608 924	chief.rally.marshall@qldcaravanclub.com.au
Web Master	Lance Haslewood	0414 295 888	webmaster@qldcaravanclub.com.au

All Enquires to the Queensland Caravan Club should be directed to Secretary of the club

About Laidley

is a rural town and locality in the Lockyer Valley Region, Queensland, Australia. In the 2016 census, the locality of Laidley had a population of 3,808 people.

Laidley is within the Lockyer Valley of South East Queensland and lies 83 kilometres (52 mi) west of Brisbane, the state capital.

The local industry has been dominated by agriculture since the end of the 19th century. Laidley has long regarded itself as "Queensland's Country Garden". Fruit and vegetable production features prominently, with the majority of beetroot grown in Australia coming from the Laidley district.

Allan Cunningham first explored the area in 1829. Cunningham named it Laidley's Plain on 22 June 1829, after James Laidley, the Deputy Commissary General of the colony of New South Wales.

The town developed around a wagon stop on the main road route between Ipswich and Toowoomba. A stop was needed after the climb over the small Little Liverpool Range west of Marburg.

By the 1850s, the area was being cleared for sheep grazing. A survey for the growing village was conducted in 1858.

Laidley Post Office opened on 1 February 1861. Laidley Creek West Post Office was open from 1927 until 1955 (a receiving office had been open from 1899). Laidley Rail Post Office opened in 1915 and closed in 1925.

The first Presbyterian service were held in Laidley in 1864 by William Lambie Nelson.

In the mid-1870s, the railway line from Grandchester stopped at a railway station 1.5 kilometres (0.93 mi) north of the town. Between 1911 and 1955, a branch railway line ran from Laidley along the Laidley Creek to the settlement at Mulgowie.

On 28 April 1886 St Saviour's Anglican church was opened in Laidley. It was designed by architect FDG Stanley. By 1888 there were a number of additions including a parsonage, a tower and a bell. In May 1909 it was announced that a new church would be built from reinforced concrete at an estimated cost of £800 and would be designed by Messers James Marks and Co, architects in Toowoomba. A call for tenders to construct the church was made in September 1909. The foundation stone was laid on 15 November 1909 by Archdeacon Arthur Rivers.

4/128 South Pine Road
Brendale Qld 4500



Hours of Business
Monday & Tuesday 8.00am to 4.00pm
Other Times by Appointment
Mobile Facility Available on Some Services

CARAVAN ACCESSORIES

AUSSIETRAVELLER



- ROLLOUT AWNINGS
- THULE BOX AWNINGS
- DOORS & WINDOWS
- ANNEXES & WALLS
- ANTI-FLAP KITS
- CURVED RAFTERS
- BIKE RACKS
- STEPS & LADDERS
- CARAVAN MOVERS
- GENERATORS
- TOILET VENTILATION
- LED LIGHTING
- ROOF VENTS
- ACCESSORIES

11-15 Oasis Court
Clontarf QLD 4019

Ph: 1300 663 868
www.aussietraveller.com.au

235 Barry Rd
Campbellfield VIC 3061

**Golf is on again
at Laidley—
Time to sharp-
en your tools.**



Australian COVID-19 Jokes

A man walks into a bar and goes up to the bartender and says "I'll have a Corona please, and hold the virus".

If I get quarantined for two weeks with my wife and I die. I can assure you it was not the virus that killed me.

Breaking News!* - Apparently the first person in Melbourne has died because of the Corona-virus. In his house they found 1000 cans of food, 50 kilos of pasta, 80 kilos of rice, 300 toilet rolls and 50L of hand sanitiser which he had panic purchased from the supermarket and stock-piled "just in case". The whole lot had collapsed and buried him.



QUEENSLAND CARAVAN CLUB INC

Nominations for Committee 2022 -2023

To be held 30 April 2022 at Samford Showground

- Committee Positions:**
- President**
 - Vice President**
 - Secretary Assistant Secretary**
 - Treasurer Assistant Treasurer**
 - Editor Convener**
 - Entertainment Coordinator**
 - Plus (3) other members for the committee**

I hereby nominate (nominee's name)

For the Position of

Proposed by

Name & Signature

Seconded by

Name & Signature.....

I agree to act if elected.....Signature

Please return to QCC Secretary no later than Saturday 16 April 2022

The QCC's current Public Liability Insurance is \$20,000,000 with Ansvar Insurance

Non-Committee Positions: Webmaster IT

Archivist Library DVDs Raffles

Chief Rally Marshal National Rally Coordinator

Introduction Coordinator CCQ Delegates

Please return the completed form to QCC Secretary no later than 16 April 2022

**Carol Day,
Secretary**

EMERGENCY RESPONSE PROCEDURE

WHEN RESPONDING TO EMERGENCY ALARM BRING

A MOBILE PHONE

FIRST AID KIT

FIRE EXTINGUISHER

QUEENSLAND CARAVAN CLUB INC

This emergency response procedure directs you:-

To react to an emergency as quickly as possible; and

Not to place your life or the life of anyone else in danger.

1 IF YOU ARE AT THE SCENE OF THE EMERGENCY RAISE ALARM any way possible such as:

Sound car horn continuously or instruct someone to do so.

Call out for help.

Bang on caravan walls.

Turn on car head lights, indicators or hazard lights, especially at night.

2 ACTIVATE EMERGENCY PLUS APP.

Open App on your phone.

Follow prompts.

DIAL 000 AND FOLLOW INSTRUCTIONS.

Details of the nearest street or intersection and GPS Co-ordinates are in the Club's First Aid Kit and are published in the QCC Wanderer.

3 IF YOU HEAR AN ALARM go quickly to the scene of the emergency.

4 COMMITTEE MEMBERS TO MANAGE SCENE UNTIL PROFESSIONAL HELP ARRIVES.

Preferably two committee members to act as follows:-

One to assist at the emergency scene; and

The other to manage communication with Emergency Services and with other QCC members.

5 A COMMITTEE MEMBER TO DIRECT OTHERS.

To wait at entry point to direct emergency vehicles within the grounds.

Some members may be required at intermediate points to help with directions for emergency vehicles.

6 IF YOUR ASSISTANCE IS NOT NEEDED AT THE SCENE OF THE EMERGENCY,

Go to the designated **Emergency Assembly Point** and await instructions. If the **Emergency Assembly Point** has not been designated go to the main entrance of the hall and await instructions.

BE FAMILIAR WITH THIS EMERGENCY RESPONSE PROCEDURE

AND ALWAYS RESPOND TO AN ALARM.

Just a reminder that we have a number of Businesses that support our club through the advertisements of their business in the QCC Wanderer. QCC would like to thank these businesses for their continued support and would encourage members where possible to engage with these businesses for repairs and sales.



MACH1
Caravan & RV Solutions
ABN 52 134 287 712

- Service
- Repairs
- Insurance Repairs
- Solar Packages
- Modifications

Philip Hooper

Unit 4, 10 Boeing Place
Caboolture, 4510

www.mach1caravanrepairs.com.au

Jonathan Bothamley

(07) 5495 2146

mach1caravans@outlook.com



FUSION
RV & Marine Audio
PLATINUM DEALER



ALKO
ESC
ELECTRONIC STABILITY CONTROL
CERTIFIED INSTALLER



DEXTER SWAY CONTROL
Authorised Installer



BOS JOCKEY WHEEL
Authorised Dealer
Find us on: **facebook**

CAPALABA CARAVAN REPAIRS

Insurance | Private | Air Conditioners
Refrigeration | Servicing | Awnings



Coast to Coast CARAVAN & LEISURE
DOMETIC **truma** **Eberspächer**

CCR Your Appointment

Phone: (07) 3823 2322

Fax: (07) 3823 5957

Email: info@capalabacaravanrepairs.com.au

Web: www.capalabacaravanrepairs.com.au

Unit 2, 9 India Street Capalaba QLD 4157



Jayco **Brisbane camperland**
Sales | Service | Accessories
Camper Trailers | Pop Tops | Expansos | Toy Haulers | Caravans | Motorhomes
Discover Living RV Accessories Store
RV Service Centre
(07)3917 5555
www.brisbanecamperland.com.au



FREEZE-TEC
MARINE / CARAVAN REFRIGERATION & AIRCONDITIONING
CARAVAN REPAIRS
☎ 07 3286 3522 📍 9 Grant Street, Cleveland QLD 4163

Aussie Escape Caravans

SERVICE • SALES • SUPERSTORE • REPAIRS



40 SOUTH PINE ROAD
BRENDALE, QLD, 4500

PH:
(07) 3205 7738

EMAIL:
SERVICE@AUSSIEESCAPECARAVANS.COM



WEIGH TO GO!
CARAVAN TOWING and COMPLIANCE CENTRE

BRAND NEW WONDERLAND RV



Get your car and caravan weighed with us! Our Towing Compliance centre has everything you need to ensure you are compliant and ready to hit the road!

Aussie Escape Caravans are now QLD's exclusive Wonderland RV Dealership! Come and see our display vans today!



Action

Mobile Caravan & Trailer Repairs

- Servicing • Towing • Insurance Work

Mobile: 0419 703 189

REFRIGERATION SERVICE

Specialist in Gas and Electric Refrigeration
QLD & VIC

Phone
3425 2420

Caravan Refrigeration Service

M - 0407 670 534
E - info@caravanrefrigerationservice.com.au
www.caravanrefrigerationservice.com.au

Over 25 Years Experience



B&B Caravan Service & Repairs

- All Makes & Models
- Gas & R.W.C.
- Rollout Awnings
- Air-Conditioners
- Fridge Repairs
- Member C.I.A
- Insurance Repairs

Warranty Agent for Jayco, Windsor, Millard, Theford & Many More

24 JOHNSTONE ROAD, BRENDALE.

Ph: 07 3881 3884.

Email: bbcaravan@optusnet.com.au

Mobile: 0408 870 751

ANTI-FLAP KITS & Curved Roof Rafters

AUSSIE TRAVELLER



Available in black or white • Optional LED lighting
Will prevent wind flap and in combination with curved roof rafters will prevent rain pooling
Extensions for large awning projections

- ROLLOUT AWNINGS
- THULE BOX AWNINGS
- DOORS & WINDOWS
- ANNEXES & WALLS
- ANTI-FLAP KITS
- CURVED RAFTERS
- BIKE RACKS
- STEPS & LADDERS
- CARAVAN MOVERS
- GENERATORS
- TOILET VENTILATION
- LED LIGHTING
- ROOF VENTS
- ACCESSORIES

11-15 Oasis Court
Clontarf QLD 4019

Ph: 1300 663 868
www.aussietraveller.com.au

235 Barry Rd
Campbellfield VIC 3061

THE AWNING MAN

CARAVAN - RV MOTORHOMES

- AWNINGS
- ANNEXES
- ANTI-FLAP KITS
- CURVED RAFTERS
- ACCESSORIES

MOB 0411 139 340

ON-SITE INSTALLATION IS OUR SPECIALITY

Servicing Brisbane and its Environs
The Caravan and RV Specialists

BRINGING COVER TO YOU!



CRUISEMASTER™
AUSTRALIA'S LEADER IN ALL-TERRAIN TOWING TECHNOLOGY

ATX XT CRS GT
SUSPENSION SYSTEMS
FO D035 DO045
COUPLINGS

CRUISEMASTER.COM.AU 07 3624 3800
FACEBOOK/INSTAGRAM @CRUISEMASTERCOUNTRY

FOR THE VAN
PRE-TRIP INSPECTIONS
SUSPENSION RETROFITS & SERVICING
WHEEL ALIGNMENTS

FOR THE 4X4
UPGRADES FROM REDARC, AIRBAG MAN,
FLASH DIESEL, PEDDERS, ARB, TJM

CRUISE MASTER TPC
TOWING PERFORMANCE CENTRE

LOCATED IN GEEBUNG QLD E: TPC@CRUISEMASTER.COM.AU